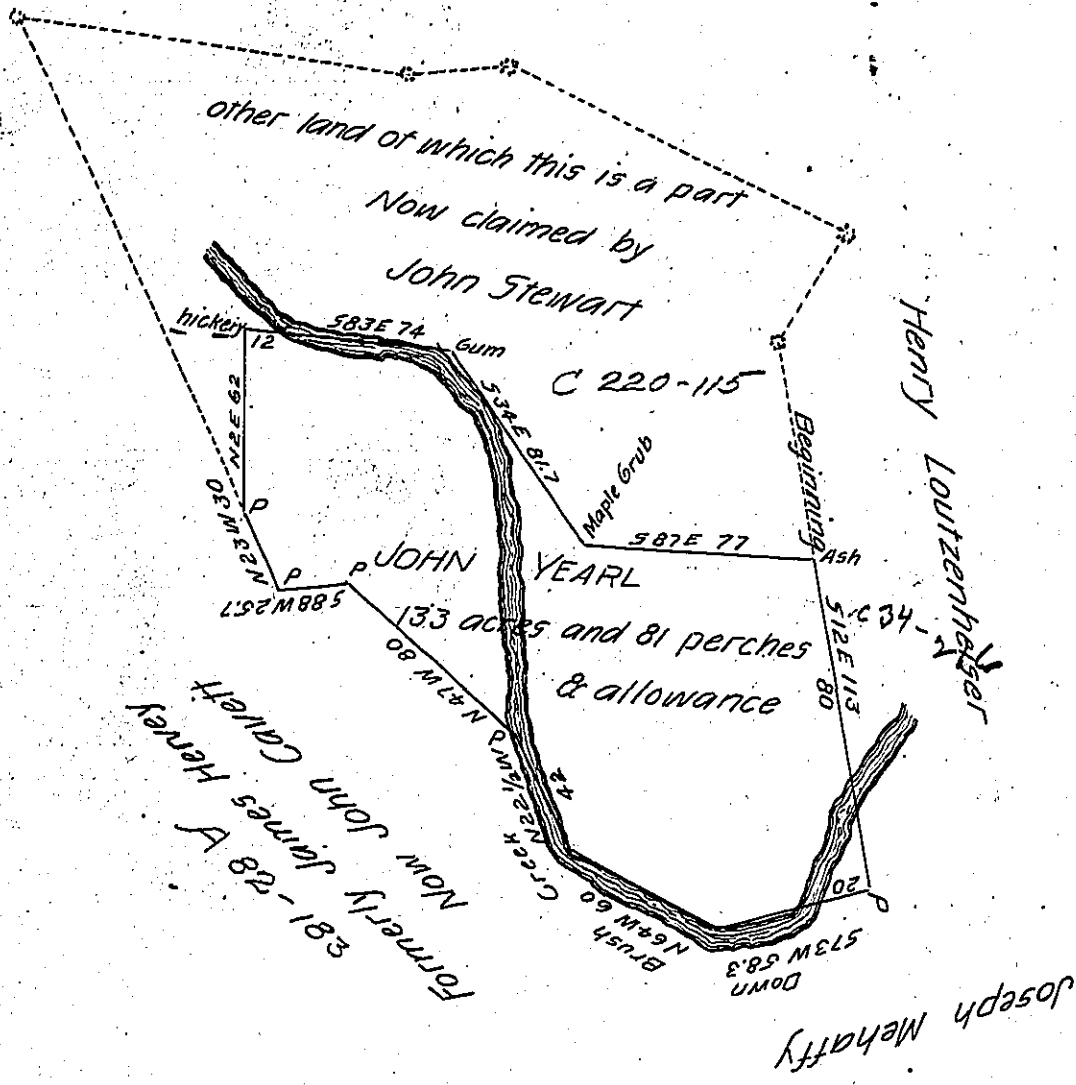


H-23-474



A draught of part of a tract of land which was surveyed for John Yeard In pursuance of an order of Survey N<sup>o</sup> 2595 dated the 3<sup>d</sup> day of April 1769 Containing one hundred and thirty three acres and eighty one perches and the allowance of six per cent for roads &c. Situate on ~~the~~ Brush creek in North Huntingdon Township Westmoreland County Surveyed February the 8<sup>th</sup> 1826

G. Carpenter D. S.

Gabriel Hiester Esquire  
Surveyor General of Penn<sup>a</sup>.

IN TESTIMONY that the above is a copy of the original remaining on file in the Department of Internal Affairs of Pennsylvania, made conformably to an Act of Assembly approved the 16th day of February, 1833, I have hereunto set my Hand and caused the Seal of said Department to be affixed at Harrisburg, this fourth day of May 1904.



*Guac P. Perry*  
Secretary of Internal Affairs.